



TRINITY PRESBYTERIAN CHURCH

PLACEMAKING SITE CONCEPT PLANNING

BACKGROUND, ANALYSIS + DISCOVERY

DECEMBER 2025



Grounds for Hope

- What are Grounds for Hope, the Proximity Project, and Cite Design?
 - Together, we are working towards a comprehensive plan for the intentional development of our grounds for mission and ministry into the future
- Process review
- Overview of the first concept draft
 - Categories for Enhancements
 - Pictures for Inspiration
 - High, Medium, and Low-Priority projects
- We want your feedback!
 - There will be more opportunities for specific and substantive feedback as we continue through the process
 - What we're looking for at this step of the process
 - Does this align with who we are? Did they hear and understand us, and does this reflect our values and priorities?
 - As you look at the inspiration pictures, what do you like? What do you not like?
 - Other preliminary feedback or questions
 - Email your feedback or participate in one of three Zoom feedback sessions this week:
 - Tuesday at 2 pm
 - Wednesday at 4 pm
 - Thursday at 5:30 pm
 - The full report and recording from their presentation are available on our website.

BACKGROUND

CORE VALUES

- Inclusive and progressive congregation
- Seeking to share God’s expansive love
- Committed to building congregational vitality, dismantling structural racism, and eradicating systemic poverty

WORSHIP

Creative and participatory

NURTURE

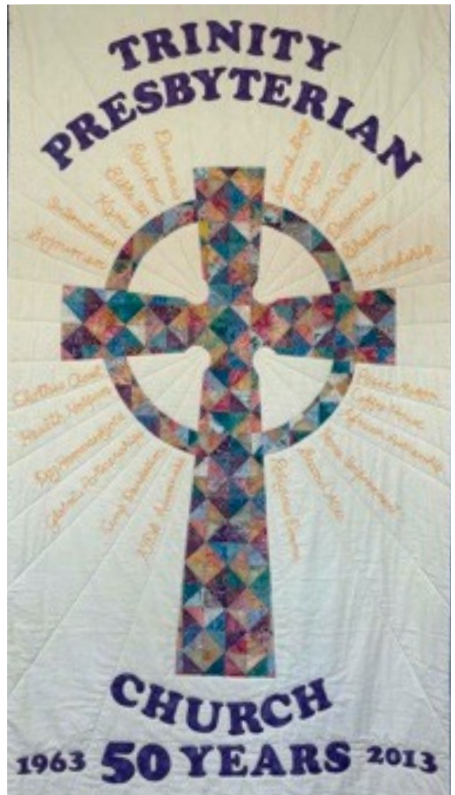
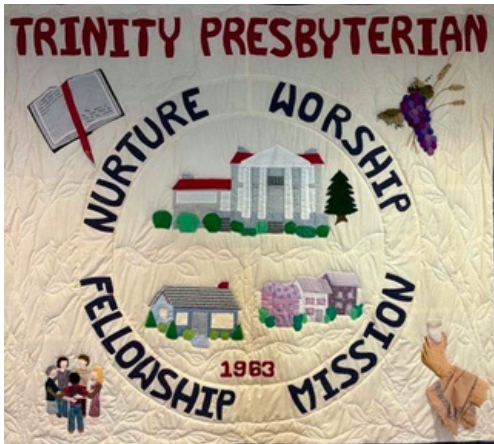
Fearless of the questions and challenges that faith stirs within

FELLOWSHIP

Building together a loving, forgiving, and caring community

MISSION

Called out to work with God for justice, peace, and love



DISCOVERY

- **SIMPLE AESTHETIC**
- **BUILD UPON NATURAL BEAUTY**
- **DEMONSTRABLY ENGAGED**
- **INTENTIONAL - FORM FOLLOWS FUNCTION**
- **MULTIPURPOSE/FLEXIBLE SPACE**
- **HISTORY - A PLACE FOR BELOVED SAINTS**
- **COLOR AND VIBRANCY**
- **CONVEY WELCOME, NOT RISK**



*Values identified during Proximity Project workshop 11/8-11/9



Circulation

- A network of paths throughout front yard guides visitors through the space and establishes connectivity from the sidewalk to the church building
- Wayfinding signage supports navigation of the property

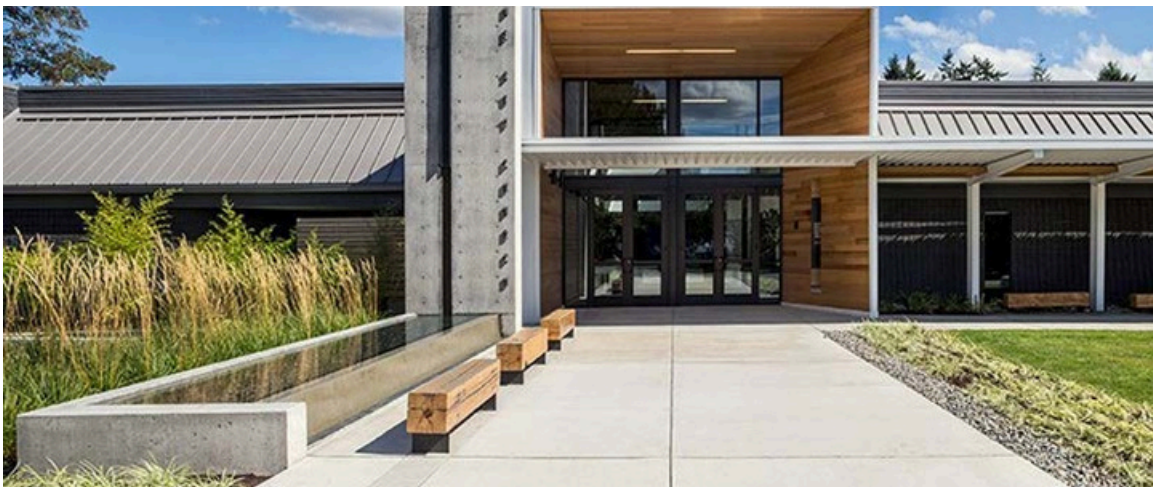
INSPIRATION



Entry and Approach

- Establish a welcoming space that is more visible from the street and draws people into the main entrance
- An expanded patio at the main entrance provides space for people to gather and socialize before entering the building
- Wayfinding signage and markers support navigation

INSPIRATION



Multi-Purpose Lawn

- The front yard can be used as a flexible space that facilitates a range of activities and moments from contemplative walks and sitting to larger gatherings and events
- A range of activities is supported via a combination of paths, signage, lighting, seating, and planting

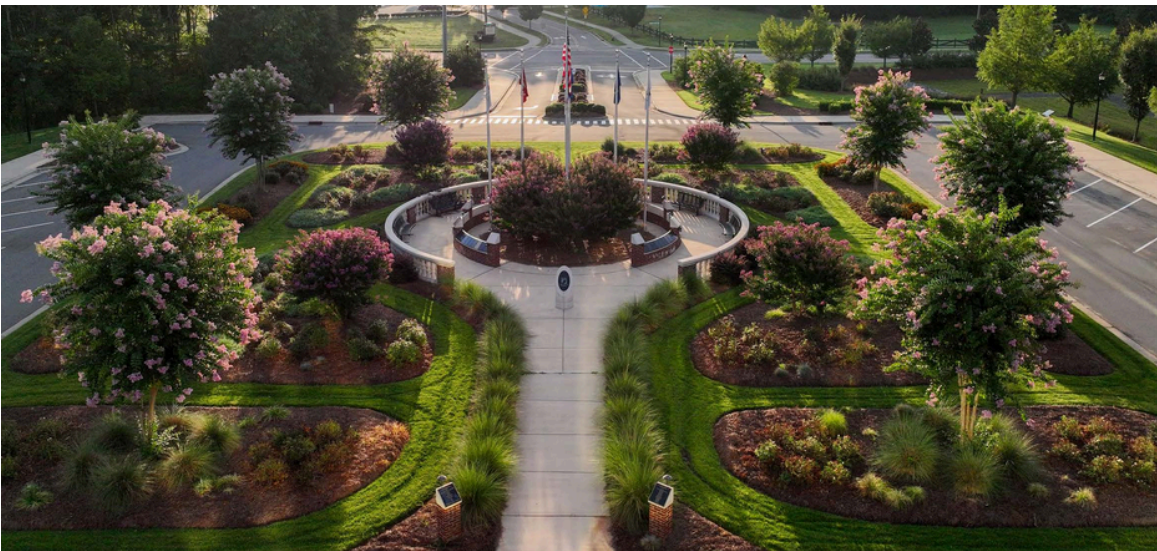
INSPIRATION



Memorial Garden

- Improved planting and pathways better define the space and facilitate rest, reflection, and small gatherings

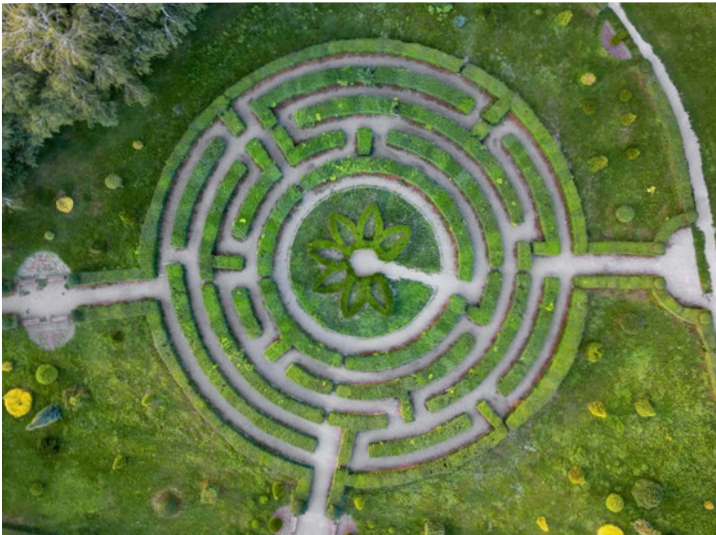
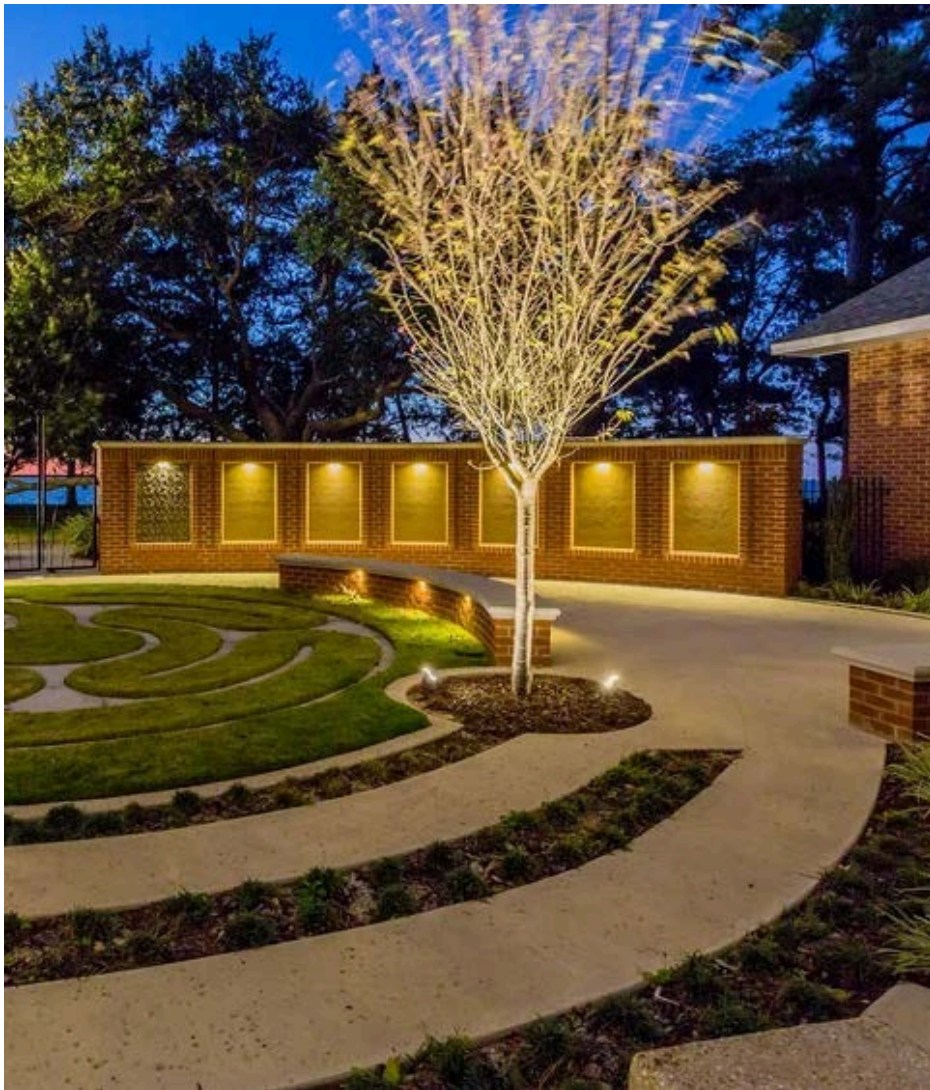
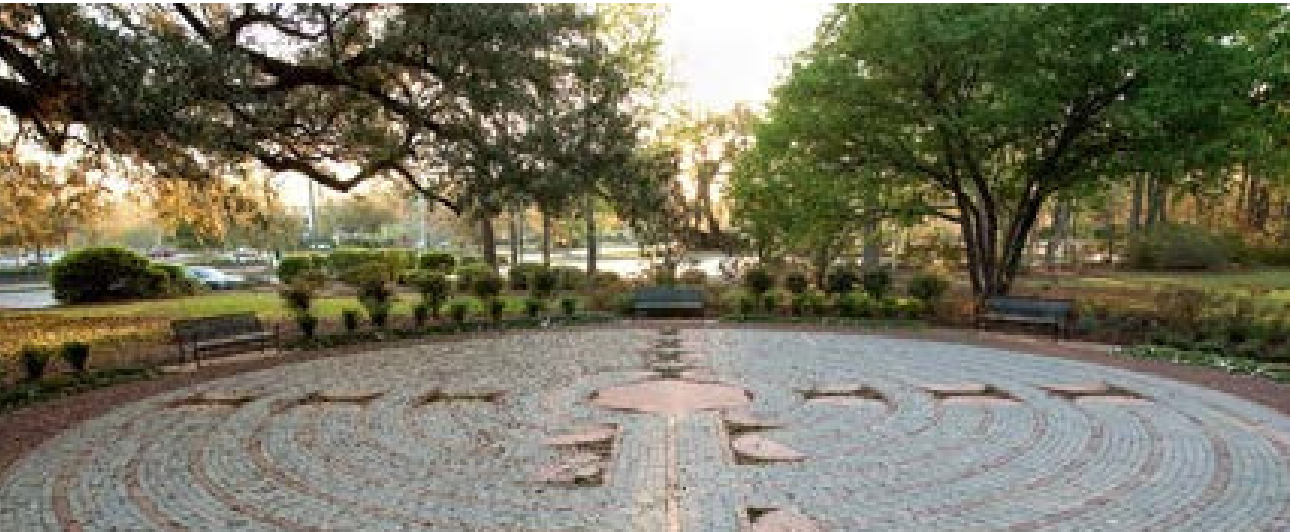
INSPIRATION



Labyrinth

- A combination of paths, planting, and seating better defines the space and draws visitors to spend time at the labyrinth

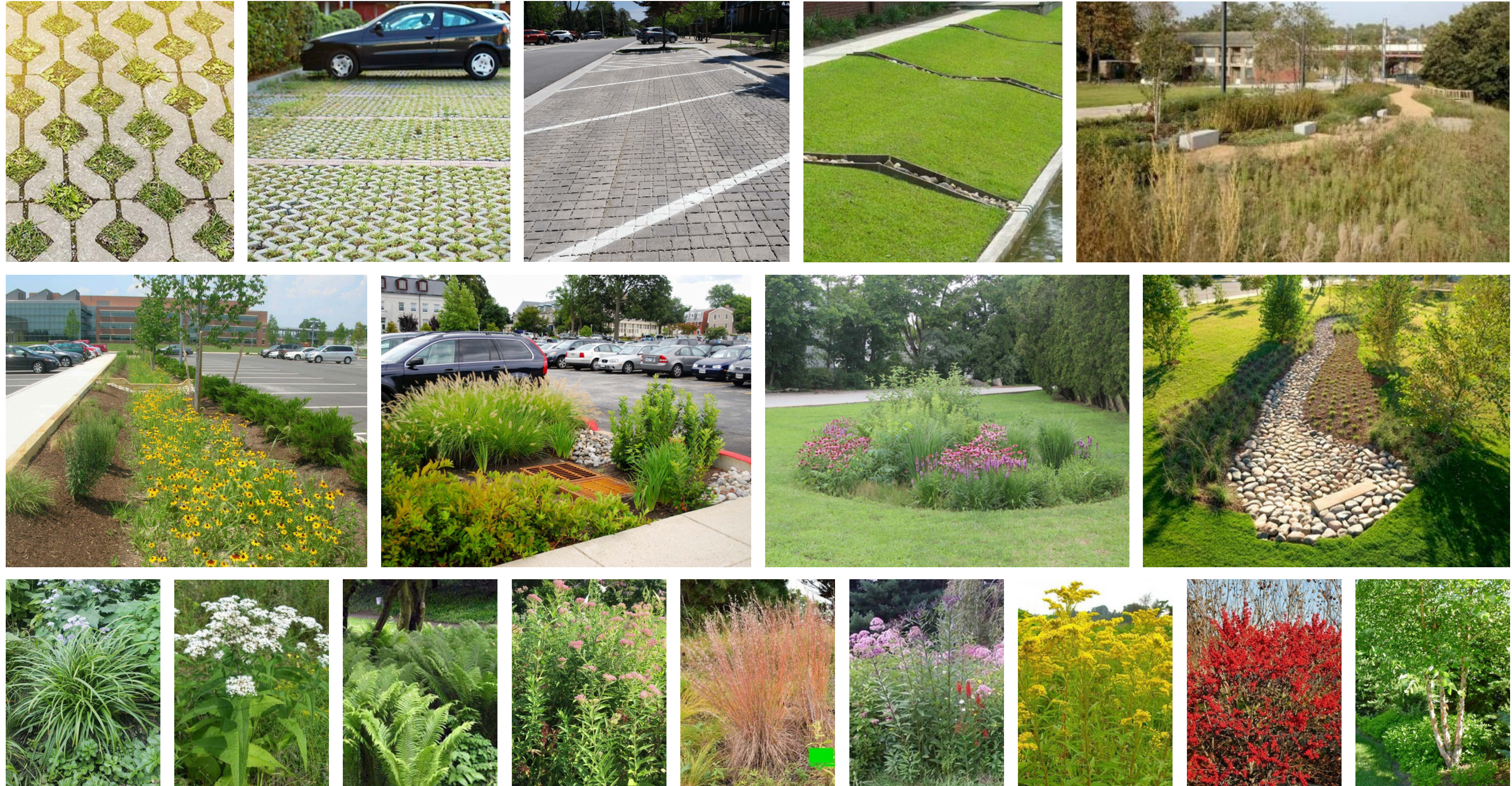
INSPIRATION



Parking Lot

- A reconfiguration of the spaces improves traffic flow
- A combination of permeable paving and expanded bioretention plantings improves drainage and brings more native plantings into the space, supporting wildlife and increasing biodiversity

INSPIRATION



Playground

- Reconfiguring the playground facilitates better, safer play
- Incorporating seating and shade invites children and families to stay

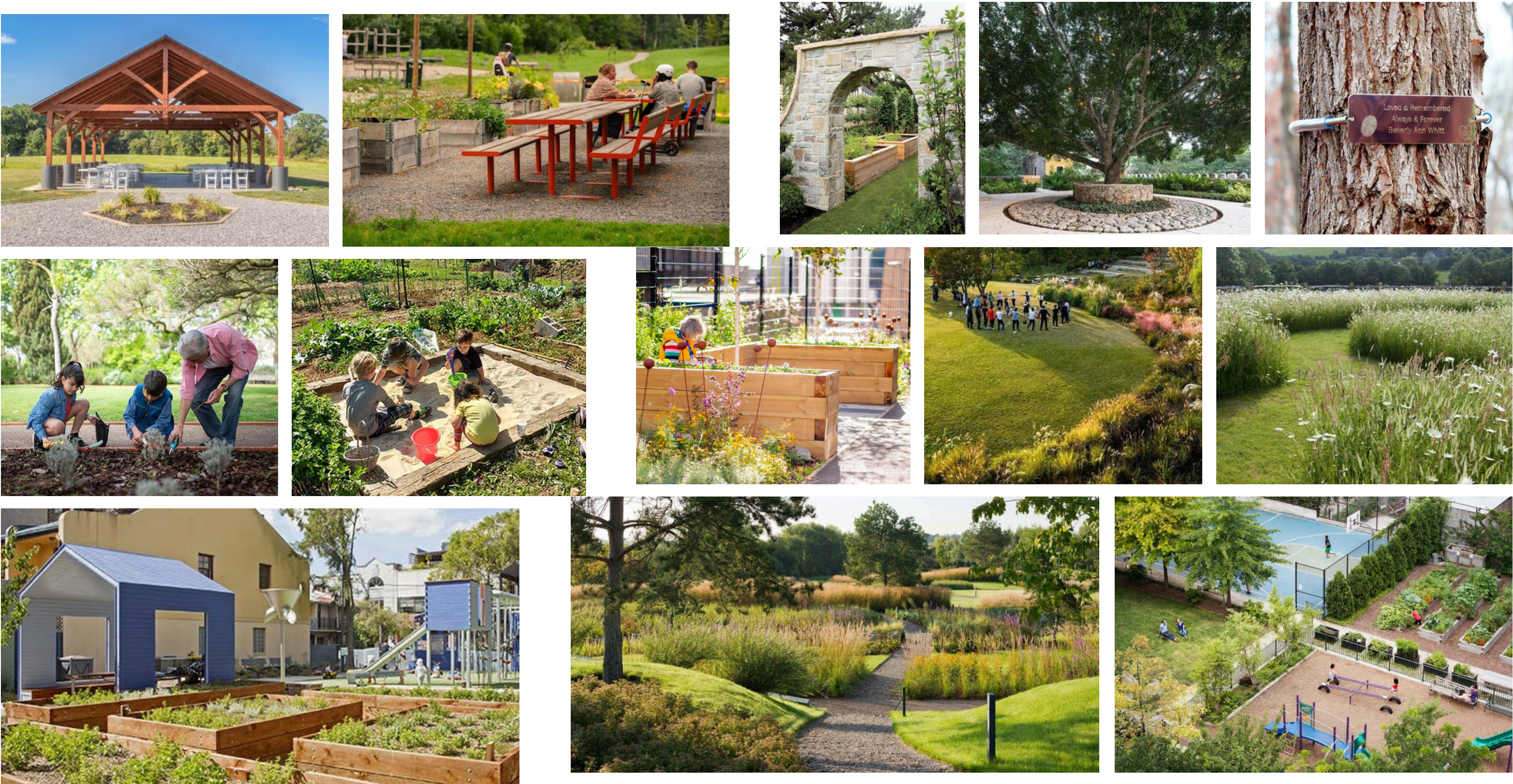
INSPIRATION



Backyard

- A cohesive design that connects the playground with a native garden, memorial trees, increased seating, and a new pavilion invites visitors to the space and facilitates movement, play, socialization, and reflection

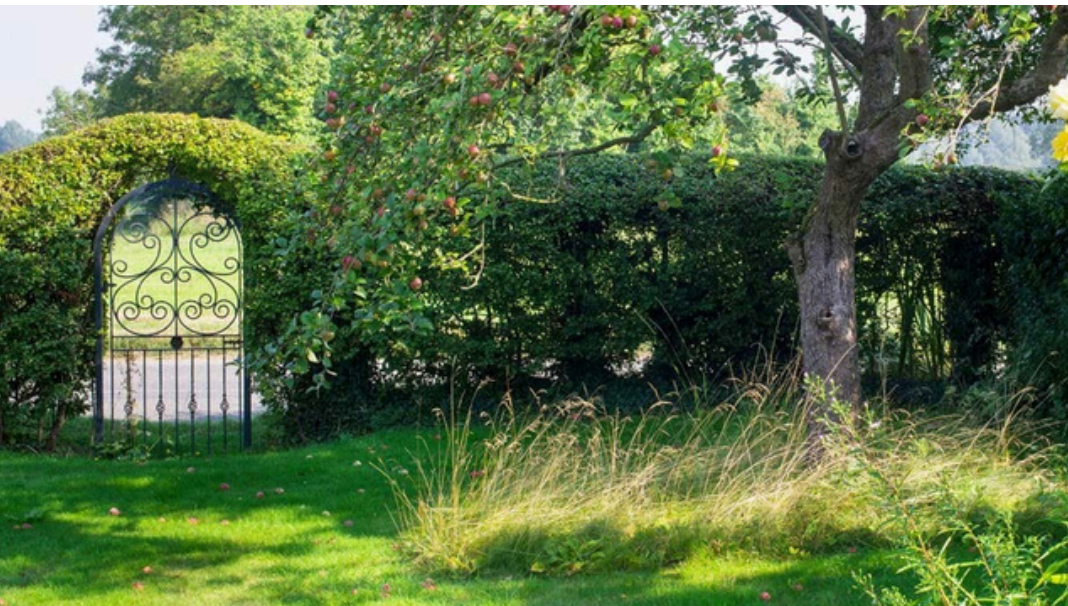
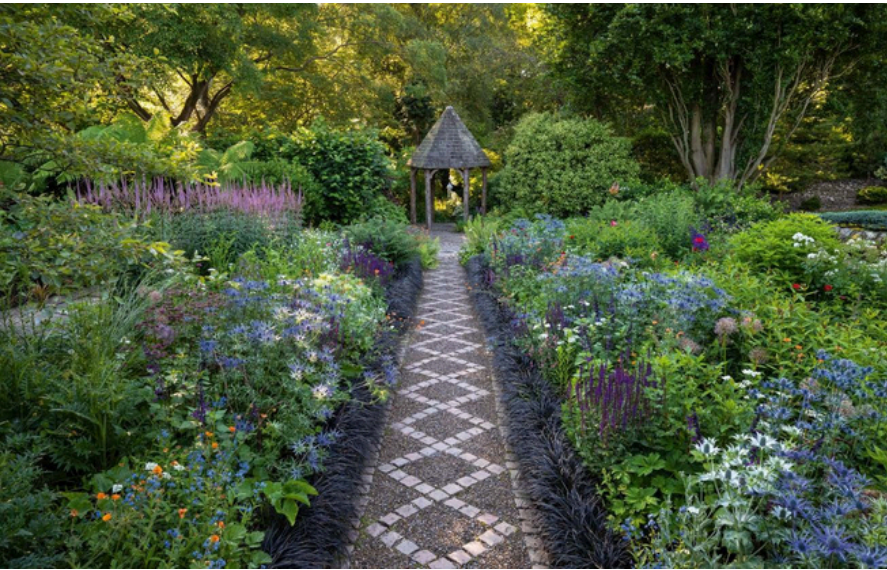
INSPIRATION



Meditation Garden

- The view from inside the sanctuary is protected via a more subtle buffer fence or a “wall” of plantings
- The threshold between the garden and the exterior is opened up to invite visitors into this contemplative space
- A mural along the building facade facing Maryland Ave., along with enhanced planting and seating, creates a more welcoming entry point

INSPIRATION



Garden Seating

- Increased seating throughout the outdoor spaces provides more opportunities for rest, reflection, and gathering

INSPIRATION



HIGH PRIORITY

Accessibility

- ADA access from parking lot
- Pedestrian access from street corner, front lawn

Wayfinding

- Signage: Parking lot, Playground, Labyrinth, Memorial Garden, Meditation Garden, street corner

Shade

- More trees, pavilion or picnic shelter near playground (min. capacity of 50)

Seating - Flexible seating, seating near playground, front lawn

Lighting - Front entry, playground

Meditation Garden Enhancements

- Public access, signage, buffer to maintain view from sanctuary, flexible space

Gathering Space - Flexible space for gathering on front lawn

MEDIUM PRIORITY

Art and Color

- Murals, walkways, parking lot circulation and games

Pollinator Garden

- Natural plantings reinforce circulation, opportunities for seating

Playground

- Reconfigure and/or relocation - Improved seating, shade, signage, code compliance

Parking Lot

- Reconfiguration of spaces and vehicular circulation
- Remove basketball hoop and portion of paving
- Install permeable pavers

Historical Markers

LOW PRIORITY

- Labyrinth enhancements
- Memorial Garden enhancements
- Public witness enhancements
- Edible orchard
- Play space for older kids
- Amphitheater

- Community garden
- Cutting garden
- Water fountain, dog fountain
- Painted parking lot for games
- Bilingual signage
- Bike maintenance station

Let us hear from you!

- Email the church office, attention: grounds team
- Mark up/write notes on copies of the proposal at church
- Participate in a Zoom this week to offer feedback and ask questions

Tuesday at 2 pm

Wednesday at 4 pm

Thursday at 5:30 pm