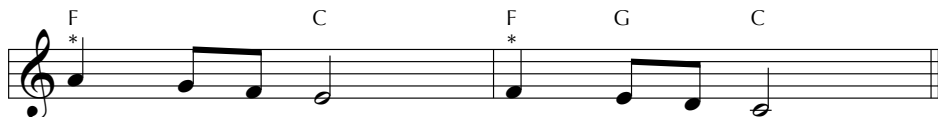


Come into God's Presence 413



- 1 Come in - to God's pres-ence sing - ing "Al - le - lu - ia,
- 2 Come in - to God's pres-ence sing - ing "Je - sus is Lord,
- 3 Praise the Lord to - geth - er sing - ing "Wor - thy the Lamb,
- 4 Praise the Lord to - geth - er sing - ing "Glo - ry to God,



- | | |
|---------------------|----------------------|
| al - le - lu - ia, | al - le - lu - ia." |
| Je - sus is Lord, | Je - sus is Lord." |
| wor - thy the Lamb, | wor - thy the Lamb." |
| glo - ry to God, | glo - ry to God." |

**May be sung as a canon.*

This anonymous worship chorus is thought to have been created extemporaneously during the 1960s and was one of the earliest songs of that kind. The opening line of the text is a paraphrase of Psalm 100:2, and the very act of singing this song fulfills that verse's invitation.