

Hymn for a New Church

Slats Toole

KINGSFOLD



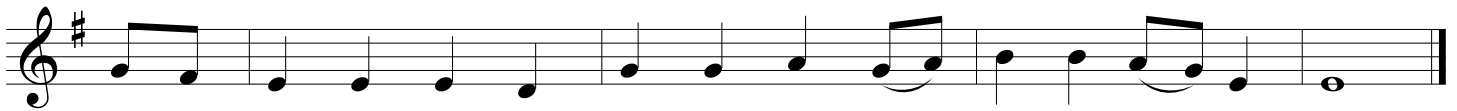
1. Can we still be your peo - ple, Lord, in ___ spite of all ___ we've been?
2. The i - dols we have built still claim our heart, our mind, our soul.
3. Our pois - oned roots can nev - er bear the fruit that you would give.



Do you still claim us as your own, al - though we're steeped in sin?
We dare not trust your guid - ing hand, we ___ cling to our ___ con - trol.
Up - root the ev - ils we hold dear, that we might grow ___ and live.



Our ___ feet stray from the path you've laid while our lips still praise your name;
We ___ craft our like - ness - es of you to ___ mir - ror our own face,
You've nev - er giv - en up on us, in ___ spite of ___ all we've been;



do you still reach out your hand to us, or ___ turn a - way in shame?
for - get - ting that your i - mage lives in ___ ev - ery land and race.
help ___ us to not give up on you, let ___ your new church be - gin!